

Gas Detector

Sigma Smart

Product code: PW-044-SM-X



Reliability



Innovations



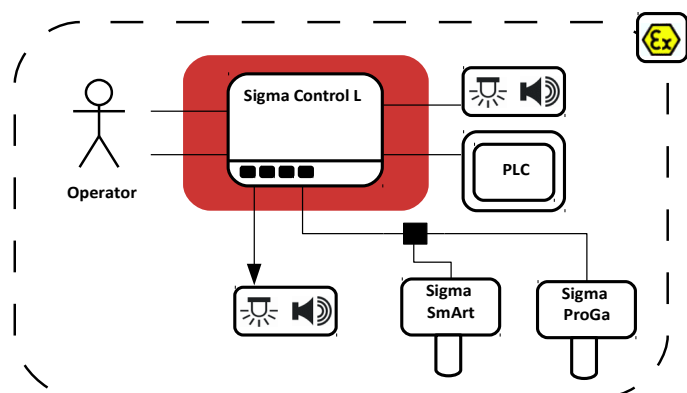
A wide range of sensors



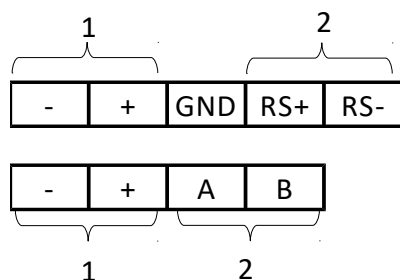
Information about the product

Gas Detector **Sigma SmArt** is a stationary device, designed to measure, monitor and detect dangerous levels of toxic or flammable gases or oxygen in the ambient atmosphere. Sigma SmArt is designed as part of the gas safety system **Sigma Gas**. The device measures the concentration of a given component, and then converts it to electric signal compatible with other devices of the gas safety system. In addition to the measurement, the detector analyses the value of the measured concentration and may provide information about Alarms. Detector is a self-diagnostic device – and in the case of detection of malfunctions, it informs the user about it.

Location and role of the device in Gas Safety System

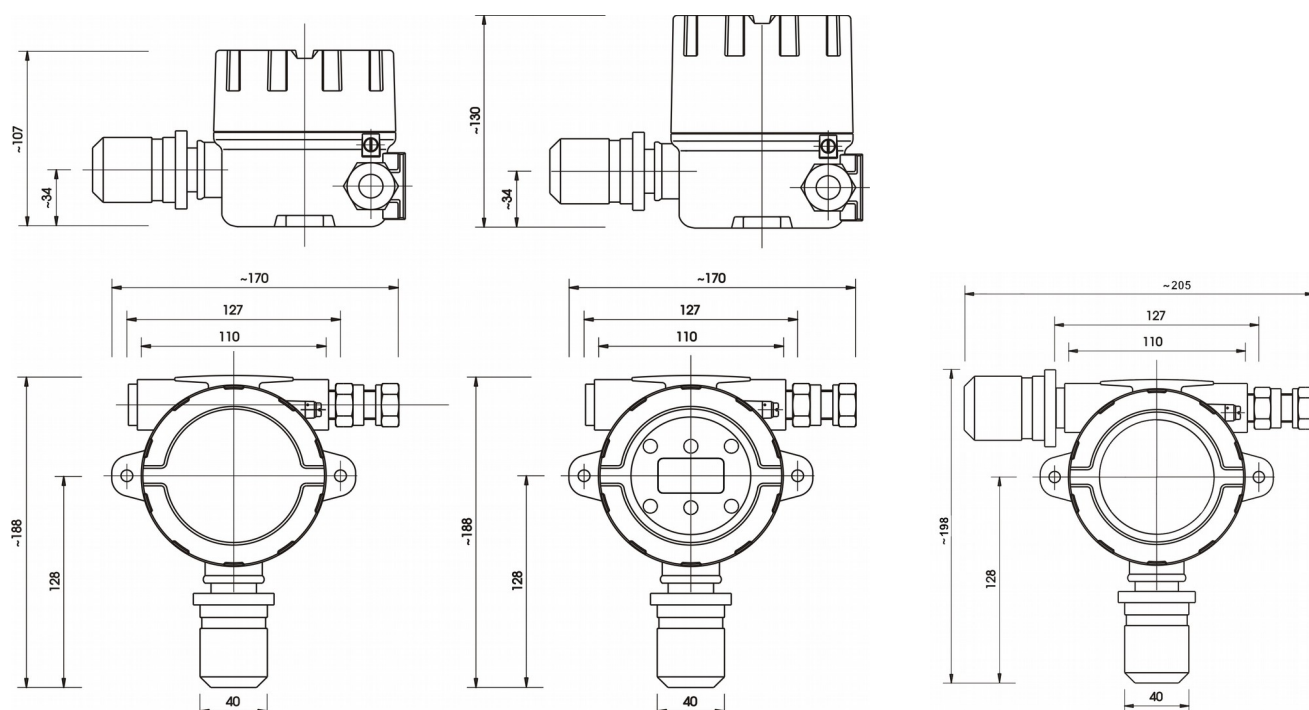


Electrical interface



No.	Name	Pin	Description
1	Supply		Power supply port
		-	Negative
		+	Positive
		GND	„GND” Don't connect
2	SBUS		System communication port. Used for data exchange between devices in Sigma Gas system.
		A, RS+	Signal line A
		B, RS-	Signal line B

Dimension




Without display

With display

With acoustic signaller

Technical specification

Power supply		Integrated signalling equipment (audible)	70 dB , 0,1 m distance (option D = FLED.A)
• Voltage Vcc	12 – 30 V ~	Cable glands	
• Power	0,48 – 3,6 W	• Cable diameter range	3,2 – 8 mm, 6,5 – 11,9 mm, 10,0 – 14,3 mm, 10 – 16 mm
Environment		• External thread	M20
• Ambient temperatures	-40 – +60°C (option T = 0) -40 – +85°C (option T = T)	Acceptable cables	0,5 – 2,5 mm ² cable lugs 2 x 1 mm ² or 2 x 0.75 mm ² should be used for double wires
• Humidity	10 – 90% long term 0 – 99% short term without condensation	Enclosure material	<ul style="list-style-type: none"> Aluminium spray epoxy / SS316L (option E = Alx) Aluminium creodur epoxy / SS316L (option E = C) SS316L (option E = SS)
• Pressure	1013 hPa ± 10% Any of the above parameters can be limited by the parameters of the sensor	Weight	3.8 kg
ATEX	 II 2G Ex d IIC T6-T5 Gb II 2D Ex tb IIIC IEC 60079-29-1	Mandatory periodic inspection	Every 12 months (Calibration Certificate validity) – the time can be shortened because of the difficult working conditions
	T6: -40 < Ta < 70°C T5: -40 < Ta < 85°C	Mounting	<ul style="list-style-type: none"> To the wall, 2 screw holes 4 mm, hole spacing 127 mm We recommend using mounting brackets PW-064-WM1 / PW-064-WM2 / PW-064-WM4.
IP	IP 63 IP 65 (using a Water-Splash Shield PW- 071-A)		
Digital communication parameters			
• Electric standard	RS-485		
• Communication protocol	SigmaBus (PW-044-SM)		
Integrated signalling equipment (optical)	Alphanumeric display 2x8 of the LCD type with LED indicators (option D = LCD) Multicolour status display FLED (D = FLED, D = FLED.A)		

Product marking

Product code	Device
PW-044-SM-X	Gas Detector Sigma SmArt

Detailed information on marking the hardware configuration to determine the product code can be found in the User's Manual POD-009-PL.



Atest Gaz A. M. Pachole sp. j.
ul. Spokojna 3, 44-109 Gliwice

tel.: +48 32 238 87 94
fax: +48 32 234 92 71
e-mail: contact@atestgaz.pl

For more details on our devices and other products and services offered by us, visit:

www.atestgaz.pl

Legal Notice:

This document is not an offer in the meaning of the civil code and other relevant regulations, but merely constitutes an invitation to conclude an agreement pursuant to article 71 of the Polish Civil Code. Atest-Gaz A. M. Pachole sp. j. stipulates the right to unilaterally change and modify the present document at any time as well as to introduce changes related to the product characteristics. Products parameters can be changed without any prior notice.