



## User Manual

# Cable glands used in offered devices



Reliable and Innovative **Gas Detection & Safety Systems**

We design, manufacture, implement and support:  
**Systems for Monitoring, Detection and Reduction of gas hazards**

We invite you to familiarize yourself with our offer on [www.atestgaz.pl](http://www.atestgaz.pl)

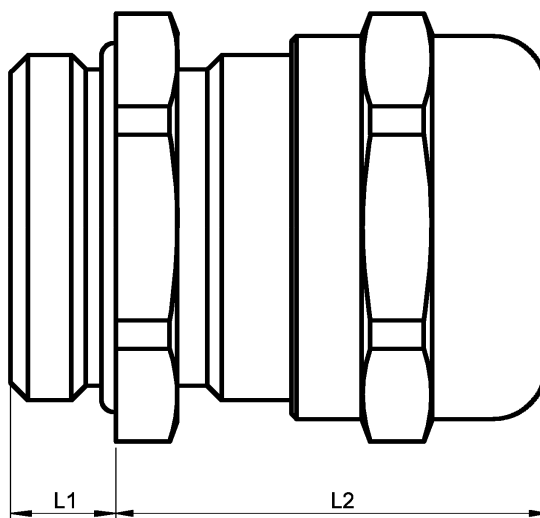
**Atest Gaz A. M. Pachole sp. j.**  
ul. Spokojna 3, 44-109 Gliwice  
Poland

tel.: +48 32 238 87 94  
fax: +48 32 234 92 71  
e-mail: [contact@atestgaz.pl](mailto:contact@atestgaz.pl)

[www.atestgaz.pl](http://www.atestgaz.pl)

## 1 Cable glands used in offered devices

Cable gland							Gas detectors						Signallers				
Code	Ex	Material <sup>1</sup>	Clamping range		L1 [mm]	L2 max <sup>2</sup> [mm]	SmArtGas 4		ReAct 4		ProGas 4		RapidGas E	RapidGas S	LTT	SOLED3/EVC/ETH	HTT
			Regulation	Size [mm]			Enclosure										
							ALB, ALZ, C	SS	ALB, ALZ, C	SS	PES	AL					
EX.NB01	●	NB	●	4 – 12	16	24	●		●			●			●	●	
EX.NB02	●	NB	●	10 – 16	16	29	●		●			●			●	●	
EX.SS01	●	SS	●	4 – 12	16	24		●		●						●	
EX.SS02	●	SS	●	10 – 16	16	29		●		●						●	
EX.PA02	●	PA		10 – 17	10	37					●						
STD.NB03		NB		7 – 13	6	26					●			●			
STD.SS06		SS		8 – 13	6	26						●		●			

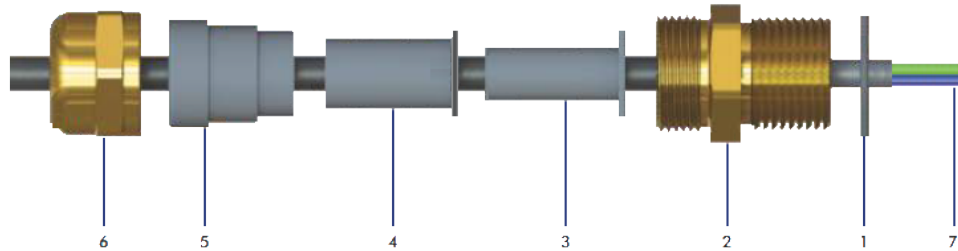


1 NB – nickel plated brass, SS – stainless steel, PA – polyamide.

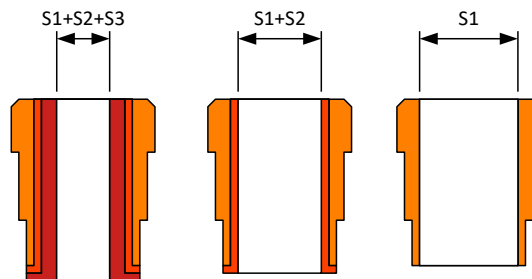
2 The dimension depends on the diameter of the cable.

## 2 Cable gland with regulated clamping range

### 2.1 Construction



Item	Description
1	O-ring
2	Cone body
3	Seal S3
4	Seal S2
5	Seal S1
6	Entry nut
7	Cable



Depending on the cable diameter we use the right combination of seals (S1, S2, S3).

### 2.2 Clamping range

Cable gland	Clamping range		
	S1+S2+S3	S1+S2	S1
EX.NB01, EX.SS01 (4 – 12 mm)	4 – 6 mm	6 – 9 mm	9 – 12 mm
EX.NB02, EX.SS02 (10 – 16 mm)	10 – 12 mm	12 – 14.5 mm	14.5 – 16 mm